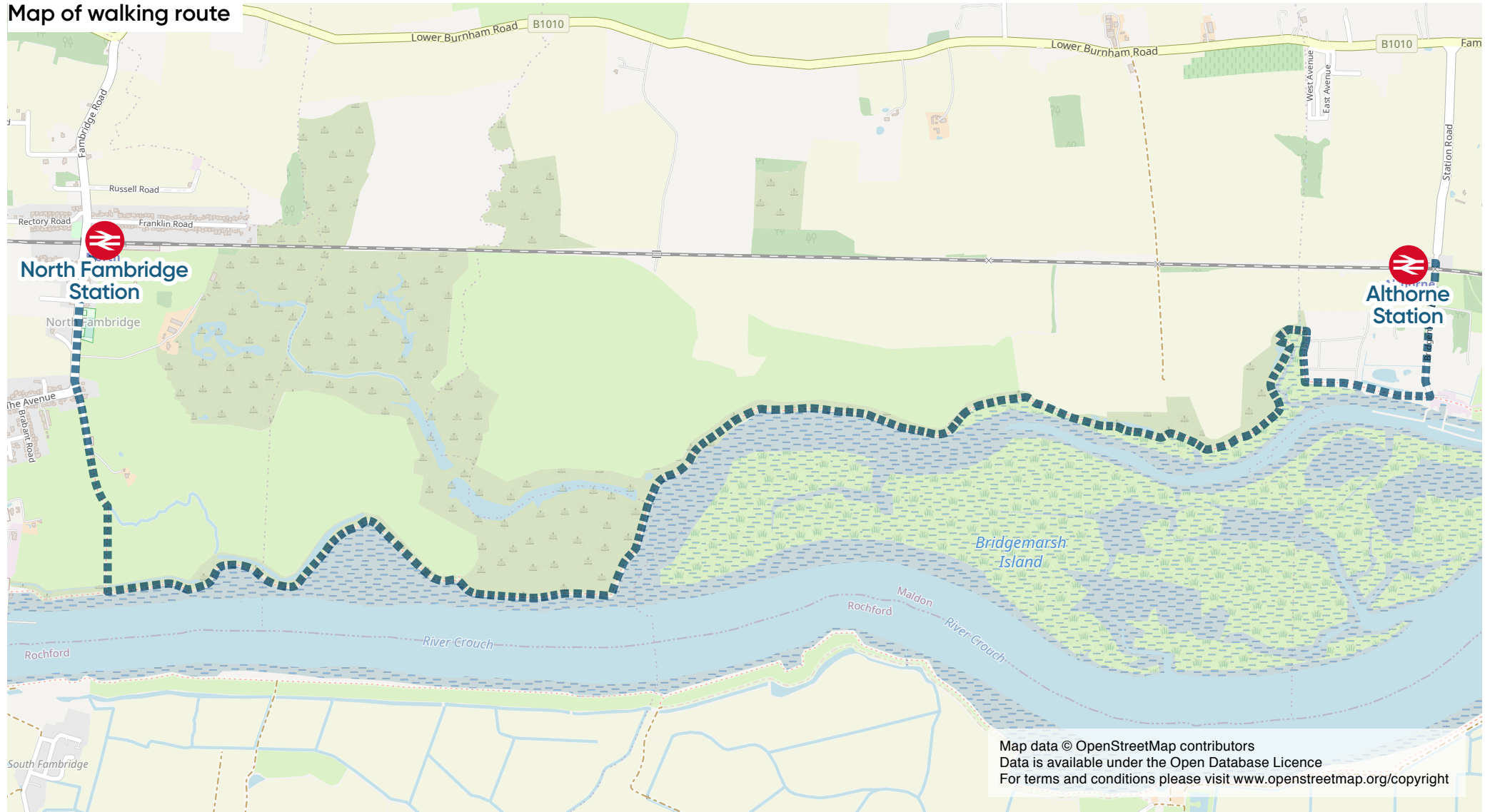


9

North Fambridge Station to Althorne Station

Map of walking route



A beautiful walk along the sea wall through the Blue House Farm nature reserve and with views of Bridgemarsh Island. The path is relatively level and clear (apart from a couple of stiles). Enjoy the open sky and watch the water and mudflats of the tidal river Crouch. When walked in July we saw Marbled White butterfly, Sparrow Hawk, Skylark, and Oyster Catchers.

The Blue House Farm nature reserve encompasses 243 hectares of coastal grazing marsh and is home to a wide variety of coastal wildlife. Due to the presence of sensitive wildlife and livestock on this working farm please stay on the footpaths. Dogs must always be kept on a lead.

Now saltmarsh and a habitat for wildlife, Bridgemarsh Island was inhabited until 1953 when the Great Flood breached the seawall. The island is rich in clay and has a history of brickwork dating back to 1736.

Planning Your Walk

- Approximately 5 miles, easy walking, allow 3 hours.

Directions

1. From North Fambridge Station, head to Fambridge Road and turn left. The road is paved along one side. Continue past the playing field. Before the road bends, turn left down Blue House Farm Chase.
2. The road leads to the Essex Wildlife Trust Blue House Farm Site of Special Scientific Interest nature reserve.
3. Continue to the end of the Chase and take the path on the right of the barn. Here the landscape opens out and you are faced with an expanse of grazing land and the sea wall raises up in the distance. The public footpath runs next to the hedgerow. Follow it to the sea wall.
4. A detour is possible at this point. Halfway towards the sea wall is a stile on the right. If you take that path you will arrive at Ferry Boat Inn, ferryboatinnsex.com (please visit their website for opening times). As you leave the inn, turn left on Ferry Road. It is approximately a 6 minute walk to the end of the road, please note there are no pavements. Once you arrive at the water turn left to join the sea wall and follow it along to rejoin the original route.
5. Having joined the sea wall footpath and turned left, the main walk stretches ahead of you. With Bridgemarsh Island ahead of you as the path bends left away from the main river channel.
6. As you continue along the sea wall you start to see human activity (boats and buildings) again; indicating the boundary of Althorne. The footpath veers off to the left and then back as it takes you round a narrow creak and brings you alongside the edge of Althorne village.
7. Remain on the sea wall footpath until the Marina.
8. At the Marina turn left onto Bridgemarsh Lane which leads into Station Road. Althorne Station entrance is on the left once you have gone over the Level Crossing.