

## The Railway Children

Much is written about life from the perspective of those who worked on the railway. But what memories do the 'railway' children have?

Jillian Kidd (pictured right) and her family arrived at North Fambridge in 1943 when her father, Wesley John Kidd, became Station Master. From then on the station frequently won the best kept gardens and station categories. Mrs Kidd polished the table in the waiting room and placed a vase of fresh flowers on it for the benefit of travellers. She also used to ensure that a fire was kept burning in the winter and passengers left wet boots and shoes behind and reclaimed them

at the end of the day – warm and dry for the next stage of their journey home.

Mr Kidd expected things to be just right, so one can imagine how one guard felt on the day it went wrong. In accordance with procedure, the guard blew his whistle for the train to depart which it did – without the guard, who had forgotten to get back on the train. His name is known but Jill is being discreet!

The family left North Fambridge in 1953 when Mr Kidd was promoted to Station Master at Southminster. Jill continued to live at Southminster Station House until 1957 when she married. The honeymoon transport was the train – fully decorated with toilet rolls!



## The Essex & South Suffolk Community Rail Partnership is reaching out via the Web

The Essex and South Suffolk Community Rail Partnership website, [www.esscrp.org](http://www.esscrp.org) continues to receive on average over 36,000 hits a month

A recent update includes the ability for the partnership to add, delete or amend Tourist Information relating to Accommodation, Attractions, Clubs, Events, Places to visit or of interest, Eat and drink, Pubs and Restaurants. All attractions need to be within easy walking distance of stations on the Crouch Valley Line, the Gainsborough Line, the Mayflower Line or the Sunshine Coast Line.

If you have information which complies with the above and you would like it added to our website, then please email it to [bryan.harker@essexcc.gov.uk](mailto:bryan.harker@essexcc.gov.uk) for the Gainsborough Line, the Mayflower Line or the Sunshine Coast Line and [grace.stevens@essexcc.gov.uk](mailto:grace.stevens@essexcc.gov.uk) for the Crouch Valley Line.

To get an idea of the information required, take a look at the related pages on the website, [www.esscrp.org.uk](http://www.esscrp.org.uk)

### Contact details

If you would like to assist us or need further information or additional copies of this document, we can be contacted as shown below:

[crp@essexcc.gov.uk](mailto:crp@essexcc.gov.uk)

Bryan Harker  
Community Rail Partnership,  
Mistley Railway Station,  
High Street, Mistley,  
CO11 1HH  
Tel: 01206 397061

Grace Stevens  
Community Rail Partnership,  
Station House, Station  
Approach, Southminster,  
CM0 7EN  
Tel: 01621 773895

### Additional contacts

'one'  
Tel: 0845 600 7245  
(calls charged at local rate)  
[www.onerailway.com](http://www.onerailway.com)

Network Rail Helpline  
Tel: 08457 114141  
[www.networkrail.co.uk](http://www.networkrail.co.uk)

Traveline  
Tel: 0870 6082608  
[www.traveline.org.uk](http://www.traveline.org.uk)

Timetables and Fares  
Tel: 08457 48 49 50  
[www.nationalrail.co.uk](http://www.nationalrail.co.uk)

*All information correct at time of going to print*



# Local Lines

The Essex and South Suffolk Community Rail Partnership is made up of: Essex and Suffolk County Councils, Babergh, Braintree, Maldon and Tendring District Councils, Chelmsford and Colchester Borough Councils, 'one' Railway, Network Rail and the Rural Community Council of Essex.

## Success in the Community Rail Awards 2006



The Community Rail Awards 2006 ceremony was held at Shildon, near Darlington on 22nd September. ESSCRP was one of the proud winners. The award for Outstanding Delivery of the Community Rail Strategy went to 'one' Railways rural routes jointly with Essex and South



Suffolk CRP and Bittern & Wherry lines in Norfolk and the East Suffolk line, were all at the ceremony to collect the award (pictured above left).

The Manningtree station buffet came 2nd in the Best Station Buffet/Railway Pub category (pictured above right).

### NEWSLETTER ISSUE 20 AUTUMN 2006

PAGE 2 -

Community rail designation for the Gainsborough line?

PAGE 3 -

Anglia in Bloom awards

PAGE 5 -

New design for ale trail leaflet

## 'Book' a Train

A new FREE book swapping website has opened in the UK. The new service provides avid readers with access to a virtual library of more than 2000 titles.

BookHopper.com is the brainchild of 'one' railway commuter Daron Pike. The service is open to adults and children and already has 300 members with many having arranged over a dozen swaps or "Hops" within weeks of joining.

Daron says the site is not profit driven and the only cost involved is postage and packing. He added "Commuters often read on the train from along the Crouch Valley line, so the support of the Essex and South Suffolk Community Rail Partnership is invaluable. It's great for the environment too because we're recycling books over and over again".

To join simply register with the site and upload three of your old books to your virtual bookshelf. By signing up you agree to post your books to other members on request but in return you can ask for any title listed.

Happy reading!!!!

*All information correct at time of going to print*

## ***Community Rail designation for the Gainsborough line?***

The Government feels that rural railways and branch lines are important to many parts of the country. Therefore the Community Rail Division of the Department for Transport (DfT) has taken over the former Strategic Rail Authority's "Community Rail Development Strategy." It can be found on the DfT's web site [www.dft.gov.uk](http://www.dft.gov.uk).

The strategy looks at innovative ways of operating local branch lines through a programme of cost management, a drive to increase passenger numbers and direct community involvement via Community Rail Partnerships, local authorities and other stakeholder groups.

In the strategy, fifty six routes across England and Wales are proposed to be designated as official DfT Community Rail Lines. Since its launch, a number of branch lines across the country have already been designated, such as Watford Junction to St Albans, Sheffield to Huddersfield and Plymouth to Gunnislake among others. It is now the turn of one of ESSCRP's lines to be designated.

The Gainsborough Line (Sudbury to Marks Tey) has been selected and the official DfT consultation took place during September. The aim is to work closely with ESSCRP to build on the good work already being undertaken by the Gainsborough Lineside Action Group, a team of enthusiastic volunteers who have become adopters of the stations along the line.

It is early days as yet and the ESSCRP are not aware of the outcome of the official consultation; however you will be kept informed through the newsletter and the individual line group meetings.

## ***From Little Acorns .....pips as well***

Alresford Station - Around fifteen years ago Dennis Abley a resident of Alresford, planted an acorn alongside the station and an oak tree still stands today with a plaque commemorating the event. Sadly Dennis passed away 2 years ago.

The crab apple tree which also stands outside the station was planted from a pip by Pauline Hunt.

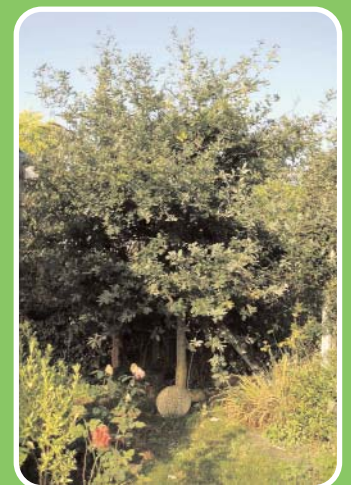
Mistley Station - The fir tree to the right of the entrance to Mistley station was planted circa 6th April 1864 to commemorate the "turning of the first sod" to join the Harwich Branch of the Great Eastern Railway with the Tendring Hundred Railway to Walton on the Naze. The tree, believed to be one of six, has a preservation order on it.



Tree at Mistley



Pauline's apple tree



Dennis Abley's oak tree

# The Anglia in Bloom Competition

Eleven of the stations within the Essex & South Suffolk Community Rail Partnership were recognised for their work under the “adopt a station” programme at the recent Anglia in Bloom competition held at the Civic Hall, Thurrock.

ESSCRP provides small grants to the adopters for the purchase of plants, flowers and shrubs for most of the stations covered by the partnership.

Chappel & Wakes Colne and Sudbury stations won Silver Gilt awards, Burnham on Crouch, Frinton and Wrabness stations won Silver awards, Althorne & Manningtree stations won Bronze awards and Certificates of Achievement were awarded to Bures, Clacton, Mistley and Woodham Ferrers stations.

‘one’ adopter, Corinne of Chappel & Wakes Colne station said “She was into recycling in a big way. All the surplus vegetation from the gardens is shredded and together with grass cuttings, old and new compost and kitchen waste is made into new compost for the following year”.

Corrine also uses water retention granules, the baskets are lined with old compost bags, the tubs have polystyrene in their bases to make them easier to move, this uses up scrap polystyrene and saves on compost. Pots and plants are also saved from year to year. Finally she has plans to save rain water in water butts as long as they can be screened and not look too unsightly. A big thank you to all of the station adopters, volunteers and helpers for their continued enthusiasm, hard work and fund raising.



Chappel planted phone box



One of many flower beds at Chappel

## SWF's IT approach to Information

Summer visitors arriving at Woodham Ferrers got a special welcome from a new mobile phone service. It's the latest idea from a group of local volunteers who have adopted the station and style themselves the 'Friends of Woodham Ferrers railway station'.

Visitors with WAP-enabled mobile phones key a code into their phone on arrival at the station. Their screen then fills with scrollable text and pictures to guide them on their way. Full instructions are displayed on the Community Rail notice board near the booking office window. The service is free and users pay only their normal WAP access charges.

Through their support of the Community Rail Partnership the Friends aim to increase off-peak use of the Crouch Valley Line and also to draw in visitors from stations in East London to spend time (and money) at local tourist attractions.

The success of their WAP-welcome has encouraged the group to consider other ways of exploiting new technologies. They are now looking towards a daily podcast, downloadable at the office for enjoyment on a portable mp3 player during the journey home. Yet another example of Essex and South Suffolk Community Rail Partnership leading the way along the branch lines of Britain!

# Events List 2006/2007

BBC Essex Events  
See [www.bbc.co.uk/essex/going\\_out](http://www.bbc.co.uk/essex/going_out)

What's on in Essex  
See [www.hidden-treasures.co.uk](http://www.hidden-treasures.co.uk)

What's on in Suffolk  
See [www.suffolk.org.uk/tourism](http://www.suffolk.org.uk/tourism)

Maldon Tourist Information Centre  
Tel: 01621 856503

Sudbury Tourist Information Centre  
Tel: 01787 881320

Tendring Tourist Information Centre  
Tel: 01255 423400

Harwich Tourist Information Centre  
Tel: 01255 506139

Further details can be found at [www.essex-sunshine-coast.org.uk](http://www.essex-sunshine-coast.org.uk), [www.visitcolchester.com](http://www.visitcolchester.com),  
[www.tendringleisure.org](http://www.tendringleisure.org) & [www.esscrp.org.uk](http://www.esscrp.org.uk).

**All events are located close to a railway station. All details correct at time of going to press**

## Sunshine Coast Line Events 2006/2007

All year round	High Woods Country Park (10 min walk from Colchester North Station)	01206 853588 <a href="http://www.colchester.gov.uk">www.colchester.gov.uk</a>
All year round	Clacton Pier, Pier Avenue, Clacton On Sea	01255 421115 <a href="http://www.clactonpier.co.uk">www.clactonpier.co.uk</a>
All year round	Walton Pier, Walton on Naze, Essex	01255 672288 <a href="http://www.waltonpier.co.uk/Content/home.htm">www.waltonpier.co.uk/Content/home.htm</a>
All year round	Walton Swimming Pool, Princes Esplanade, Walton on Naze, Essex	01255 676608 <a href="http://www.tendringleisure.org">www.tendringleisure.org</a>
All year round	Clacton Leisure Centre, Vista Road, Clacton on Sea, Essex	01255 429647
All year round	Colchester Leisure World, Colchester, Essex	01206 282000 <a href="http://www.colchesterleisureworld.co.uk">www.colchesterleisureworld.co.uk</a>
All year round	Tendering Events	01255 423400 <a href="http://www.tenderingleisure.org">www.tenderingleisure.org</a>
All year round	Walton Events	01255 677006 <a href="http://www.walton-on-the-naze.com">www.walton-on-the-naze.com</a>
Nov 5	Colchester Castle Park, Firework Display & Bonfire	01206 282920
Dec 09	Walton Christmas Event	01255 677006 <a href="http://www.walton-on-the-naze.com">www.walton-on-the-naze.com</a>

## Mayflower Line Events 2006/2007

All Year Round	Mistley Quay Workshops	01206 393884 <a href="http://www.manningtreeaz.co.uk/company/161.asp">www.manningtreeaz.co.uk/company/161.asp</a>
All Year Round	Dovercourt Swimming Pool, Low Road, Dovercourt	01255 508266 <a href="http://www.tendringleisure.org">www.tendringleisure.org</a>
All Year Round	Electric Palace Cinema, Harwich	01255 553333 <a href="http://www.electricpalace.com">www.electricpalace.com</a>
All Year Round	Harwich Events	01255 506139 <a href="http://www.harwichconnexions.co.uk">www.harwichconnexions.co.uk</a>
All year round	Tendering Events	01255 423400 <a href="http://www.tenderingleisure.org">www.tenderingleisure.org</a>
All year round	A circular walk based on Manningtree station	<a href="http://www.anderton.btinternet.co.uk">www.anderton.btinternet.co.uk</a>
All year round	Walks from Manningtree station	01473 262463 <a href="http://www.dedhamvalestourvalley.org">www.dedhamvalestourvalley.org</a>
Oct 28	Harwich Guy Carnival	01255 504480
Dec 07 - 09	Harwich & Dovercourt Bay Winter Ale Festival	01255 886004
Dec 17	Harwich Santa Train - Harwich Town Station to Manningtree	01255 506139 <a href="http://www.harwichconnexions.co.uk">www.harwichconnexions.co.uk</a>

## Crouch Valley Line Events 2006/2007

All year round	Marsh Farm Country Park, Hullbridge Road, Sth Woodham Ferrers Regular events throughout the summer. A 15 minute walk from South Woodham Railway Station.	01245 321552 <a href="http://www.marshfarmcountrypark.co.uk">www.marshfarmcountrypark.co.uk</a>
All year round	Battlesbridge Antiques Centre	01268 575000 <a href="http://www.battlesbridge.com/main.php">www.battlesbridge.com/main.php</a>
All year round	Walks from Althorne Station to Battlesbridge Station	<a href="http://www.britishwalks.org">www.britishwalks.org</a>
All year round	Burnham Stitch & Craft Club, Second Tuesday of the Month, Burnham Carnival Hall, Devonshire Road, Burnham on Crouch	01621 786405
All year round	Tropical Wings Butterfly Farm, Wickford Rd, South Woodham Ferrers	01245 425394 <a href="http://www.tropicalwings.co.uk">www.tropicalwings.co.uk</a>
All year round	South Woodham Ferrers Leisure Centre	01245 329535 <a href="http://www.chelmsfordbc.gov.uk">www.chelmsfordbc.gov.uk</a>
All year round	Cycle Hire	01621 783344 <a href="http://www.dengiecyclecentre.co.uk">www.dengiecyclecentre.co.uk</a>
All year round	Farmers Market - 3rd Sunday of the month, Carnival Hall, Burnham	07932 627574
All year round	Fitsteps Walks	01621 876215/875811 <a href="http://www.fitstepshealthwalks.org.uk">www.fitstepshealthwalks.org.uk</a>
All year round	BookHopper	<a href="http://www.bookhopper.com">www.bookhopper.com</a>
Part year	Battlesbridge Events. All Sundays	01268 575000/561700 <a href="http://www.battlesbridge.com">www.battlesbridge.com</a>
Dec 10	Southminster Santa Trains	01621 784962/786376

## Gainsborough Line Events 2006/2007

All year round	The Kingfisher Leisure Centre, Station Road, Sudbury. (Minute walk from Sudbury Rail Station)	01787 375656 <a href="http://www.kingfisher.leisureconnection.co.uk">www.kingfisher.leisureconnection.co.uk</a>
All year round	The Quay Theatre, Quay Lane, Sudbury	01787 374745 <a href="http://www.quaytheatre.org.uk">www.quaytheatre.org.uk</a>
All year round	Sudbury Events	<a href="http://www.sudburysociety.co.uk">www.sudburysociety.co.uk</a>
All year round	East Anglian Railway Museum, Chappel & Wakes Colne Station	01206 242524 <a href="http://www.earm.co.uk">www.earm.co.uk</a>
All year round (Except Christmas)	Gainsborough's House, 46 Gainsborough Street, Sudbury	01787 372958 <a href="http://www.gainsborough.org">www.gainsborough.org</a>
All year round	River Trips on the Stour, Sudbury	01787 372602 <a href="http://www.riverstourtrust.org.uk">www.riverstourtrust.org.uk</a>
All year round	Chappel Galleries, Colchester Road, Chappel. Thursday to Sunday, 10am – 5pm	01206 240326 <a href="http://www.chappellgalleries.co.uk">www.chappellgalleries.co.uk</a>
All year round	Walks from Sudbury Station to Marks Tey Station Walks from Marks Tey Station to Manningtree Station Walks from Bures Station	<a href="http://www.britishwalks.org">www.britishwalks.org</a>
Dec 09 - 20	East Anglian Railway Museum, Chappel Santa Specials - 9, 10, 16, 17 & 20 December	01206 242524 <a href="http://www.earm.co.uk">www.earm.co.uk</a>

# Community Rail Day 2006

The Community Rail Day 2006 saw the ESSCRP display stands in two prime locations, Liverpool Street and Norwich stations.

Grace Stevens and her Crouch Valley Line volunteers, Una Norman, the Rev. and Mrs Haworth and one of the youngest volunteers, Nathaniel Honeyman, took the prime location on the concourse of Liverpool Street station (pictured below left). Grace had negotiated the coup in obtaining agreement to have the ESSCRP stand at the main London terminus. Not to be beaten though, Bryan Harker and Linda Smart along with a Gainsborough Line volunteer Darren Johnson, set off for Norwich station concourse (pictured below right).

As would be befitting the name of the day, all travel was done by train, whilst carrying display stands and cases full of "goodies" to give away. Specially filled carrier bags were handed out to passengers as they got off the trains and information about travel and the ESSCRP was provided at the stands. The day provided a good opportunity to spread the Community Rail word and it certainly proved to be very successful for all concerned.



## Spanning the Centuries

The East Anglian Railway Museum held its Spanning the Centuries event on Sunday 19th March offering a unique opportunity to ride in a variety of vintage coaches pulled by a 100 plus year old steam engine or a 1958 diesel railcar.

For the really adventurous there was an opportunity to drive a diesel shunting locomotive, to help drive a pump trolley or climb aboard a steam engine and guards van

Vintage steam and diesel road vehicles were on display and in the goods shed there was displays of 'trains, toys, treasures and trinkets. The Essex and South Suffolk Community Rail Partnership was on hand with information and brochures

For more information about the museum visit [www.earm.co.uk](http://www.earm.co.uk) and for information about the Essex and South Suffolk Community Rail Partnership visit [www.esscrp.org.uk](http://www.esscrp.org.uk)

A good time was had by all.....



# A new home for the Dengie Cycle Hire

The Dengie Cycle Hire scheme can now be found at 20 High Street, Burnham-on-Crouch, Essex, CM0 8AA – opposite the Star Public House.

Bikes can be booked in advance by contacting 01621 783344 or by fax on 01621 784740 or by email though the link on the website at [www.ravenautospare.com](http://www.ravenautospare.com). A link to the website is also available on the Events Page of the Crouch Valley line on our website at [www.esscrp.org](http://www.esscrp.org).

At a hire cost of £5 per day you can choose from a selection of over 30 bikes

All year round opening hours are:

Monday – Friday	9:00 – 18:00
Saturday	9:00 – 17:00
Sunday	9:00 – 13:00

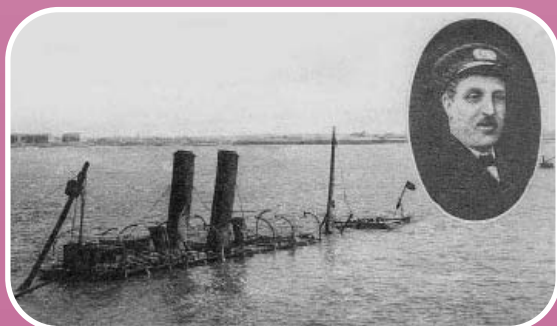
After hours drop-off can be arranged at the time of booking.

## Capt Fryatt Follow up

The Essex & South Suffolk Community Rail Partnership was approached by a gentleman named Keith Howells regarding the article in our last issue of Local Lines advertising the exhibition in Harwich to remember the war hero Capt Fryatt. He said that his wife is Capt Fryatts' granddaughter and that she was most interested in the article.

Mr Howells went on to say that one of Capt Fryatts' daughters is still alive and living in Weymouth, and that they correspond by letter and phone. He is requesting any other information our readership might have on Capt Fryatt and he would be pleased hear from us.

He had already received some information from one of the nuns in Bruges showing a photo of Capt Fryatts' monument. Both Mr and Mrs Howells visited Bruges about 5 years ago and saw the place where he was shot after the trial for 'piracy'. He had used the Great Eastern steamer to ram a German submarine forcing it to submerge.



## Take the new Ale Trail

The ESSCRP has decided that the popular Mayflower and Gainsborough Line Ale Trail leaflets needed a re-vamp. Therefore it is being re-designed into one new comprehensive "Ale Trail". As we go to press, the newer updated version, which contains "trails" along three lines, Gainsborough, Mayflower and the Crouch Valley Lines in one leaflet, is being designed and printed.

To obtain your free copy of this exciting new ESSCRP publication, visit local tourist information offices and staffed branch line stations where they will be available later in the year or contact one of the ESSCRP offices to have one sent out to you.

## Catch up with the news at Burnham!

Passengers at Burnham-on-Crouch have kept up with the news since Kevin Champion opened his shop on the platform earlier this year. As well as newspapers and magazines, Kevin sells hot and cold drinks, sweets and tobacco. The shop is open from 5.15 am until 12 noon Mondays – Fridays. It's certainly a welcome addition at the station.